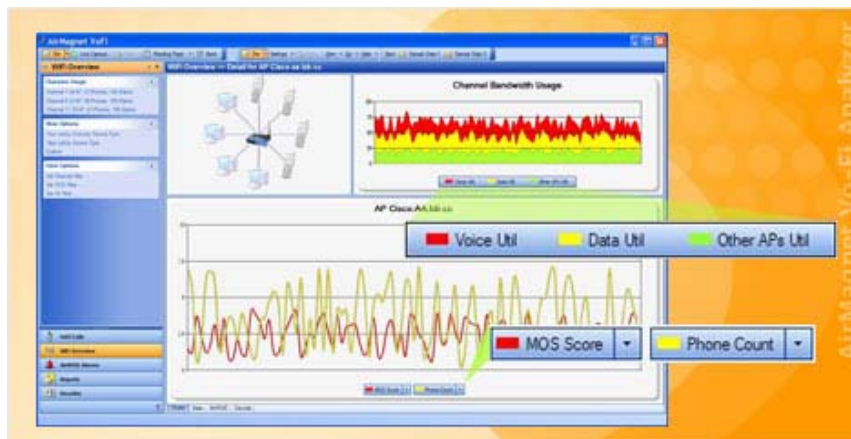


## AirMagnet Vo-Fi Analyzer

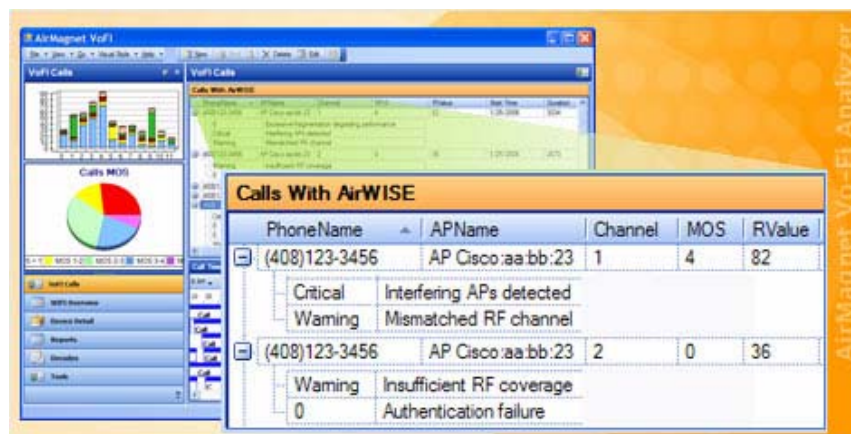


AirMagnet's Vo-Fi Analyzer is the first of its kind: a professional monitoring and troubleshooting tool for Voice over Wi-Fi. With Vo-Fi Analyzer, you can directly monitor the quality of every call on the wireless LAN, automatically detect the sources of voice problems, and actively troubleshoot problems from the phone all the way to the wired call manager. Vo-Fi Analyzer is an expert system that considers all aspects of wireless voice and diagnoses device-related problems, QoS problems, RF problems, WLAN problems and even wired network problems associated with Voice over Wi-Fi.



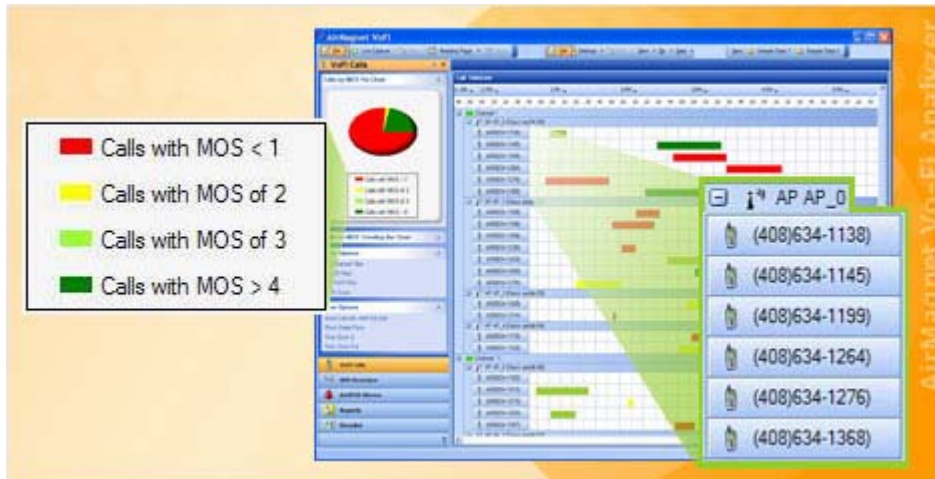
### Ensure Voice Quality

Vo-Fi automatically audits your WLAN to verify all Quality-of-Service and 802.11e settings are configured correctly and identifies any QoS traffic problems. You can track individual calls and see consolidated statistics—such as MOS Scores and R-Values—for the entire network or by channel.



### Access the AirWISE® Expert

- The AirWISE® module automatically identifies the root causes of Vo-Fi problems and alerts you. Each alert includes a detailed explanation of the problem, including what devices or network setting caused the issue and recommended solutions.
- Over 20 unique alarms including: no QoS implemented, overloaded AP/Channel, high packet-error rate, excessive roaming, AP interference, dropped calls, line busy, retry threshold, ARP caching disabled, SFS, and more.



### Analyze Statistics by Device

- View the interconnections between all devices in the network.
- Actively track both voice and data statistics for any device.
- View dozens of real-time diagnostic charts and customize your console to simultaneously view windows for out of order packets, jitter, fragmentation, number of calls per AP, and more.



### Integrate with the Call Manager

- Vo-Fi Analyzer integrates with your wireless call manager for complete end-to-end call tracing.
- AirMagnet correlates wire and wireless information to determine if the source of voice quality issues.
- Fetch session details from your call manager and correlate wired and wireless MOS scores and call statistics.

### For more details, contact:

Phoenix Datacom , Phoenix House, Smeaton Close, Rabans Lane, Aylesbury, HP19 8UW  
tel: +44 (0)1296 397711 email: [info@phoenixdatacom.com](mailto:info@phoenixdatacom.com) web: [www.phoenixdatacom.com](http://www.phoenixdatacom.com)