



AIRMAGNET

Mobile Solution Suite

The Wireless Market

Companies from all industries are turning to Wi-Fi as a way to extend their traditional networks, making the wireless LAN a standard component of the modern enterprise. This surge of new technology has likewise spawned an entirely new breed of security, performance and reporting challenges. The AirMagnet Mobile Suite is purpose-built to address these challenges throughout the entire WLAN lifecycle. With AirMagnet, professionals can plan and deploy their networks, monitor their security policies, proactively detect threats, identify performance problems, and actively troubleshoot the network itself. As the solution of choice for more than 4,000 real-world customers and trainers, AirMagnet Mobile provides the most complete, usable and proven solutions on the market.

The AirMagnet Mobile Suite

The AirMagnet mobile suite is a collection of “must have” stand-alone wireless tools that network and security professionals can bring with them anywhere to solve any Wi-Fi problem.

The AirMagnet Laptop Analyzer and Handheld Analyzer directly monitor the airwaves to diagnose and troubleshoot wireless LANs from any Windows-based Laptop PC or Pocket PC, respectively. This includes easy detection and location of all Rogue APs, a comprehensive audit of all wireless policies, automated vulnerability assessment and the industry's best wireless intrusion detection. In addition, each analyzer automatically detects the root-cause of dozens of performance problems and provides quick access to an arsenal of active tools to actually solve network problems.

AirMagnet Surveyor complements the mobile analyzers by providing a fast, scientifically accurate way to plan, deploy and optimize wireless LANs. With AirMagnet Surveyor, users can see RF coverage, signal interference and packet statistics on their floorplan, and even simulate a variety of corrective actions before they are implemented.

Proven in the field by thousands of customers, the AirMagnet Mobile Suite provides a complete Wi-Fi solution set that can go anywhere and meet any wireless challenge.



The AirMagnet Mobile suite covers all areas of WLAN Management, including:

- Rogue AP and Intrusion Detection
- Performance Monitoring
- Professional Compliance Reporting
- Connection Troubleshooting
- Installation Surveying

AirMagnet Analyzers

Find Problems Automatically

The AirWISE™ Wireless System Expert is at the heart of every AirMagnet product. AirWISE is the built-in intelligence that runs continuously to analyze Wi-Fi Security and Performance issues, identify and track wireless devices, pinpoint WLAN problems, and suggest potential solutions. AirWISE introduces a proactive role to WLAN management by identifying more than 130 threats before they can impact the network, and eliminating the need for users to manually interpret cumbersome packet decodes and wireless data.

Lockdown Security Policy

In a wireless LAN, if even one AP or station fails to run the appropriate security measures, the entire network is put at risk. Furthermore, several different security strategies may be needed in order to secure the entire enterprise. AirMagnet allows IT to pick the ideal security measures for their WLANs and then monitor for 100% compliance. Supported protocols include:

- WEP
- LEAP
- PEAP
- TKIP
- MIC
- 802.1X
- TTLS
- TLS
- 802.11i
- WPA
- PPTP VPN
- L2TP VPN
- SSH VPN
- IPSEC VPN
- FORTRESS
- CRANITE

Comprehensive

Vulnerability Assessment

In addition to the defenses listed above, AirMagnet performs a continuous vulnerability assessment of the network. This detects subtle weaknesses that are often overlooked, allowing IT to take corrective action before a problem ever occurs. This includes tracking the reuse of WEP IVs, identifying unconfigured clients automatically scanning for APs, and a host of potentially damaging security configurations.

Rogue Device and Intrusion Detection

WLANs are a perpetual target for intruders because attacks can be launched without physical access to the building. For this very reason, AirMagnet automatically detects and alerts on dozens of wireless intrusions and hacking strategies including Rogue Devices, Denial of Service attacks, Dictionary Attacks, Faked APs, RF Jamming, and many more. This includes the ability to detect and identify the use of various “stumbler” tools which may indicate an unauthorized user attempting to snoop your network.

Proactive Performance Management

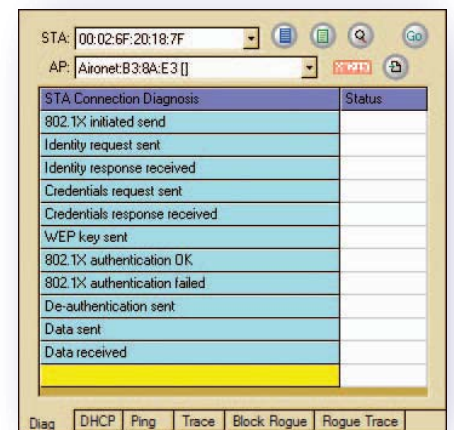
Even the most secure network will be a failure if it can not reliably meet the demands of the network users. For this reason, AirMagnet has developed over 40 alerts to identify an entire range of performance issues including RF problems, Traffic problems, Configuration issues, Overloaded Infrastructure, and Hardware Failures or resets. Like all AirMagnet alerts, each comes with a detailed description of the problem, access to additional diagnostic data, and advice on corrective action.

Active Notifications

The AirMagnet Laptop Analyzer can be configured to trigger email or pager notifications automatically in response to a particular event. Each alarm can be configured with multiple unique notification targets, insuring that staff only receive alerts that are relevant to their role.

Ubiquitous Monitoring

The AirMagnet Laptop Analyzer monitors all 802.11a, 11b, and 11g channels insuring complete visibility of the entire Wi-Fi domain. AirMagnet is also compatible with a variety of internal and external wireless adapters. Please visit the AirMagnet website for a complete list of supported adapters and their capabilities.



Active 802.1x Troubleshooting



AirMagnet Channel Detail

Integrated Reporting

AirMagnet's integrated reporter makes it easy to turn your Wi-Fi analysis sessions into professional customized reports. Users can leverage a library of pre-built reports or generate their own targeted reports simply by selecting specific items of interest from the user interface. Reports cover all areas of management including RF statistics, device reports, security and performance reports, as well as detailed compliance reports.

Compliance Reports

In addition to the standard reports, AirMagnet also provides detailed compliance reports covering a variety of regulatory standards including Sarbanes-Oxley, HIPAA, PCI-DSS, DoD, and GLBA. These reports step through each section of the standard, including a pass-fail assessment of each section and device. As a result, IT staff can take the guess work out of their compliance audits, and complete their work in a fraction of the time.

Voice over Wi-Fi

AirMagnet includes a deep set of features to diagnose and test any voice-over-wireless deployment. The AirWISE analysis engine automatically scans for 802.11e related policy violations, and proactively identifies problems in voice deployments. The solution also includes the industry's only Vo-Fi testing tools with the Jitter Tool and Roaming Tool.

Remote Troubleshooting

In addition to its normal local monitoring, an AirMagnet Laptop can optionally connect to another remote Laptop Analyzer for real-time remote network analysis and troubleshooting. This allows technicians in the field to easily share information and expertise on demand.

Active Troubleshooting Tools

In addition to their monitoring and alarming capabilities, AirMagnet's WLAN Management Solutions offer a suite of tools and diagnostics to positively identify the source of problems in a WLAN. These tools allow IT to performance test a particular AP in the network, identify mismatched settings in the network, as well as identify the source of connectivity problems with traditional tools including Ping, Traceroute, Whois, DHCP, and DNS Lookup.

Track Down Any Wireless Device

The Find Tool can lock on to a particular AP or station and guide the user to the physical location of the device, allowing IT to physically track down Rogue APs and non-complying devices. The Find Tool can also be used to align signals between antennas to quickly optimize reception in line-of-sight bridging.

Multipath Detection

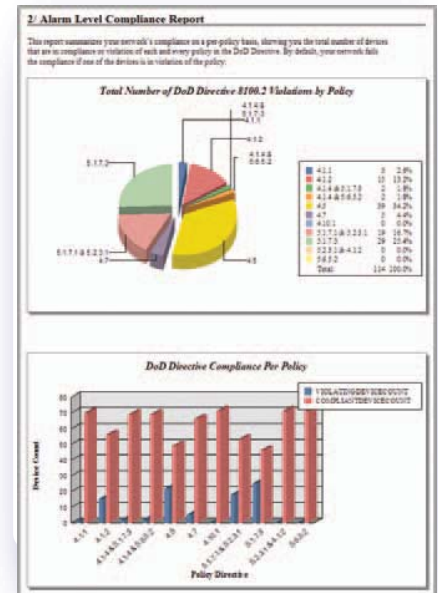
The Signal Tool allows IT to identify very rapid fluctuations in signal quality from a given access point. This can alert users to the presence of multipath interference at a particular location or can even identify a malfunctioning access point.

Connection Troubleshooting

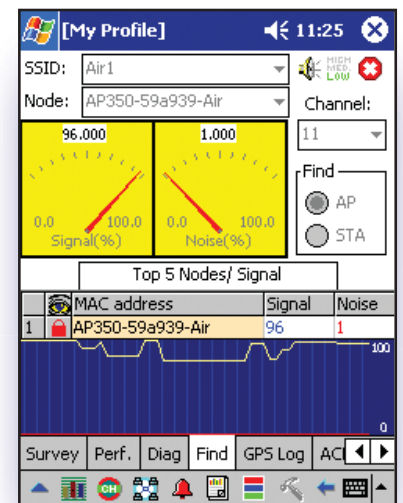
AirMagnet also includes tools to directly troubleshoot connections between any client and AP in the network. IT staff can watch the step-by-step progress of a connection and easily see where the process is breaking down.

Packet Decoding

AirMagnet Analyzers also include a real-time decode page for detailed network analysis. AirMagnet decodes the most popular protocols such as FTP, HTTP, SMTP, POP, and Telnet. Advanced filtering options allow users to focus on particular conversations based on IP address or port number.



Compliance Reports



AirMagnet Find Tool

AirMagnet Surveyor

AirMagnet Surveyor provides WLAN professionals with everything they need to perform scientifically accurate site surveys of any 802.11a/b/g network. This revolutionary software automates the collection of key Wi-Fi statistics and delivers detailed maps of the results for fast and easy network deployment, provisioning and ongoing optimization. With AirMagnet Surveyor networking professionals can:

- Insure proper overall signal coverage
- Determine ideal AP placement and output power
- Pinpoint areas of noise and channel interference
- Identify client roaming areas
- Emulate client experience in terms of speed, retry, and packet loss
- Insure adequate bandwidth for any VLAN
- Simulate network changes for post-deployment optimization.

Real-World Data

AirMagnet Surveyor is the only solution to actually connect to access points and send test data over the connection during the site survey. This means AirMagnet behaves exactly like an end-user client and collects real-world metrics such as Connection Speed, Retry Rate and Packet Loss Rate. This active approach to the site survey provides a level of accuracy simply not available from solutions that only predict performance based on signal strength.

Advanced Simulation

After survey data is gathered, users can simulate changes to the network and preview the impacts. This includes changes to AP settings such as Transmit Power, Channel, SSID, as well as environmental noise. Users can simulate moving APs to new locations or even preview the effect of adding an additional AP to the network.

AirMagnet Surveyor PRO

AirMagnet Surveyor PRO represents an advanced version of the Surveyor software containing all the functionality of the standard version plus an additional set of features tailored to the needs of the wireless expert. Additional features available only in AirMagnet Surveyor PRO include:

Professional Reporting *

An integrated reporting module instantly creates custom reports of all your site-surveys and network simulations. reports can be output in a variety of formats including PDF, XML, HTML, Microsoft Word, Excel, and many more.

Multi-floor Surveys *

With AirMagnet Surveyor PRO, users can view and analyze up to 4 floors of a building simultaneously. This allows users to see the effects of specific devices across multiple floors and provides the insight needed to plan a coordinated Wi-Fi strategy for an entire building.

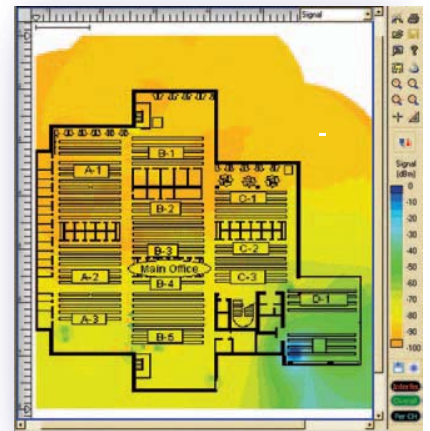
GPS Enabled Surveys *

AirMagnet Surveyor PRO integrates with leading GPS devices to provide automated highly accurate outdoor site surveys. This opens the door to hands free data collection for even the largest surveys.

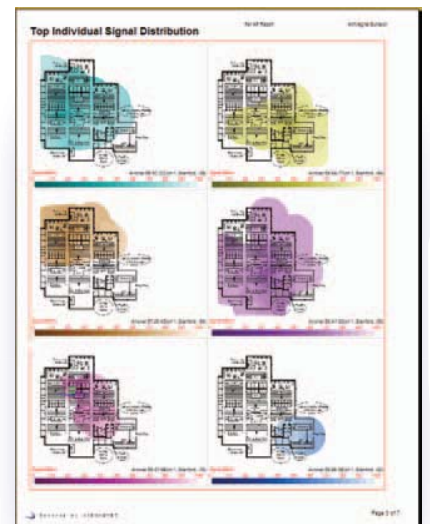
About AirMagnet

Founded in 2001, AirMagnet, Inc., provides the most trusted WLAN management and security software systems for the enterprise in handheld, laptop and distributed configurations. Used by IT professionals at more than 4,000 companies worldwide across all industries, AirMagnet offers a complete wireless management product line including WLAN analyzers, 24x7 wireless monitoring systems, site survey software, and spectrum analysis solutions. These products work together to provide unprecedented levels of network performance, security and reliability.

* Available only in the PRO version of AirMagnet Surveyor



AP Coverage Areas



Professional Survey Reports



supplied and supported by

Phoenix Datacom

www.phoenixdatacom.com

01296 397711

info@phoenixdatacom.com

